

## Southwold Primary School Information Report

### Our SEND Offer

Southwold Primary School is a mainstream school which welcomes children with special educational needs and disabilities (SEND). We make every effort to provide equal opportunities for all pupils, irrespective of gender, ethnic origin, religion, age, physical ability or academic ability. We believe that every child has an entitlement to a high-quality education and full access to the curriculum. The needs of individual children are recognised and met using a variety of approaches and differentiated teaching in partnership with parents and other professionals.

Every two weeks, we host a SEND coffee afternoon for parents and carers. School staff are involved with the coffee afternoon but on other occasions we give the parents the opportunity to socialise with other parents and carers of children with SEND. Tea, coffee and refreshments are always provided. We invite outside agencies to talk to the group such as the Autistic Spectrum Disorder team, Behaviour Support Team, dietician and Continence team

The Local Offer is a website that provides information on the services and support available from a wide range of agencies in Nottingham. The Local Offer can be found at the following address:

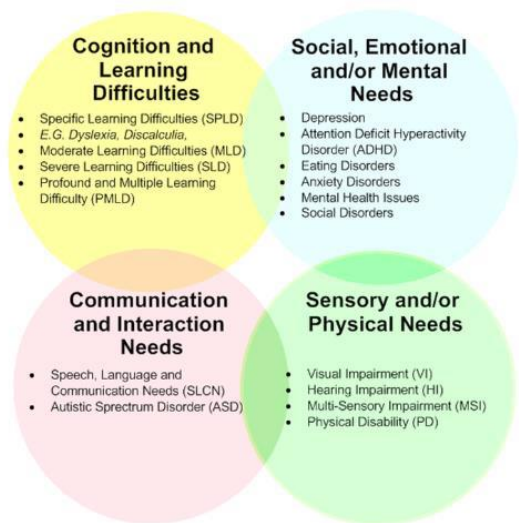
<https://www.asklion.co.uk/localoffer>

**The Special Educational Needs and Disability Code of Practice 2014 states that:**

**“A child or young person has SEN if they have a learning difficulty or disability which call for special educational provision to be made for him or her.”**

Children and young people’s Special Educational Needs are generally thought of in the following four broad areas of need and support:

1. Communication and interaction
2. Cognition and learning
3. Social, emotional and mental health
4. Sensory and/or physical needs



### Our School Procedures

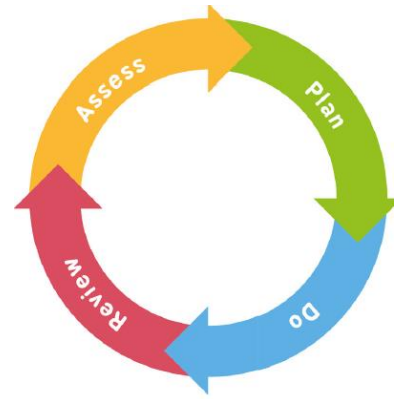
How do we identify if children need additional support?

**“Special educational provision is support which is additional or different to support usually available to young people of the same age”**

At Southwold Primary School we identify pupils with SEND by:

- Discussion with parents.
- Discussions with the class teacher / teaching assistant about concerns.
- Discussions with outside agencies such as the ASD team and paediatricians.
- Through Routes to Inclusion assessments.
- Termly reviews of progress at assessment points in the year to track attainment and progress.

A graduated response to assessing SEND follows the 'Assess, Plan, Do, Review' pathway.



- **Assess:**  
Where a child is not making expected progress, the class teacher and parents will meet, either at parent's meeting or in addition to this, to discuss the child's needs. Routes to Inclusion (R2i) can be used at this stage to identify needs as well as dyslexia screening.
- **Plan:**  
Interventions and support are planned and these can include: adaptive teaching strategies, intervention groups with TA support, 1:1 intervention, resourcing, classroom environment support such as 'enable tables' and 'working walls' and strategies from R2i.  
Where expected progress is not made, the SENDCO can refer for outside agency support.
- **Do:**  
The class teacher will put in place the suggested strategies and interventions.
- **Review:**  
The effectiveness of the support will be reviewed and the impact on the pupil will be assessed. Further support such as outside agencies can be contacted at this time.

### **Our Approach to Teaching**

At Southwold Primary School we believe all pupils should have access to quality first teaching. Our staff undergo regular professional development and training which includes but is not limited to:

- Dyslexia friendly teaching
- First Aid training
- Training for use of epi-pens and training in medical conditions such as epilepsy
- Child Protection
- Moving and Handling
- Phonics
- Reading, writing and maths interventions
- Positive Handling

### **Additional Support, Equipment and Facilities**

Some of the interventions we use at Southwold can be seen below:

Cognition and Learning	Communication and Interaction	Social, Emotional and Mental Health	Sensory and/or physical
RWI	Interactive Music	*Theraplay *Learning Mentor Support *MHST 1:1 sessions and lunchtime club *Circle of Friends *Legotherapy	Sensory Circuits Dough Disco

The interventions are monitored by the class teacher, the SENCO and phase leaders. These provisions can be seen on the pupils Provision Maps. The Provision Maps are updated termly and impact is recorded.

Where necessary, the school will ask for support from a variety of outside agencies. Additional Support for our children and families can be found at:

- The Educational Psychology Service
- The Autism Support Team
- Educational Welfare Officers
- Children And Adult Mental Health Service (CAMHS)
- Paediatricians
- The Behaviour Support Team
- Occupational Therapy
- Sensory Impaired Service
- Learning Support Team
- Speech and Language Therapy

It is important to note that some of these services require a referral from a doctor or Paediatrician. The school has a Disability Access Policy in place which can be found on the school website.

#### **How will my child be included in activities outside the classroom including school trips?**

Pupils with SEND will always be entitled to the same experiences and opportunities as all pupils. This includes extra-curricular clubs, educational and residential visits. Where additional support is required, careful consideration will be given to how this can be provided. A risk assessment is carried out prior to any off site activity to ensure everyone's health and safety will not be compromised. Any child, not just those on the SEND register, who are deemed a risk to the safety and well-being of themselves and/or others may be restricted access to school trips and visits.

#### **How Do We Assess and Review Progress?**

Class teachers always monitor the progress of the children in their class. For those children that have been identified as having SEND, we use provision maps to monitor the impact of the additional provision they receive. These will be shared with parents regularly throughout the year.

For any child working significantly behind age group expectations, we will use B-Squared to measure progress.

#### **How do we know if additional support is having a positive impact?**

- Verbal feedback from class teacher, parent and student.
- The child is making progress academically against national expectations and the gap between where they were and where they need to be is narrowing.
- By reviewing the child's targets and ensuring they are being met. This will be outlined on the child's provision map.
- Learning walks, lesson observations, pupil interviews, book looks and data analysis will all provide evidence that interventions are having a positive impact.

Children may be assessed as no longer needing SEND support when they have reached national expectations, or made sufficient progress from their starting point.

What opportunities will there be for me to discuss my child's achievement?

You will be invited to attend the termly parent's meetings to speak to your child's class teacher. In addition to this, a termly meeting will also be held with the SENDCO and your child's class teacher to review targets and progress and decide on next steps. Parents are welcomed to discuss their child outside of these meetings whenever necessary.

If your child has an EHCP (Education and Health Care Plan) an Annual Review will also take place involving parents, school staff and external agencies. The views of the pupil are also invited, where possible, at these meetings.

### **Supporting Pupils Transferring**

How will the school prepare and support my child to join the school?

To ensure a smooth transition to school we will:

- Wherever possible, meet your child before they start nursery or reception with home visits or Nursery visits.
- Receive and use relevant paperwork from their current setting e.g. any SEND or medical information.
- Arrange visits before your child starts school, for parents and children.
- Liaise closely with your child's current setting.
- Meet with agencies already involved with your child.

We understand that changing classes, teachers and schools can be a difficult time for all children and may be particularly so for some children with SEND. We aim to ensure that every transition is as well managed as possible for those children affected. Within school, transitions can be daunting and we will support a smooth transition from year groups by:

- Enabling children with SEND to have additional visits to new classes and to meet their new class teacher.
- Teachers liaise with one another to discuss support in place and any additional support needed for the following year. Teachers will create a 'One Page Profile' to support the pupil as they move to the next class/year group.
- Ensure all staff are aware of how to support children with SEND, including Midday Supervisors and any visiting agencies, such as supply staff.
- Where necessary, create transition books and information for children with SEND to refer to at home to help prepare.

You may be invited to a Transition Meeting to meet your child's new class teacher and discuss the support your child needs.

We will support your child's move to secondary school by:

- Completing paper work for external agencies to inform them of your child's needs.
- Provide information about the needs of your child to their transferring school through meetings and paperwork.
- Complete transition booklets to support your child in becoming familiar with the new routines of the school, e.g. photographs, maps and timetables.
- Liaise with the Year 7 staff and Special Needs teachers from secondary school to come to the last review meeting of Year 6.
- Where necessary, external agencies may also be involved in supporting your child's transition to secondary school which will continue for a time once they begin Year 7.

### **Our Mental Health and Wellbeing Offer**

At Southwold Primary School we have a Learning Mentor, Mrs Rebecca Stone, who supports our pupils with their mental health and well-being. She works with pupils in a variety of ways to help remove the social and emotional barriers to learning. Her role involves; check-ins with vulnerable pupils which can be daily or weekly, depending on need, she runs Theraplay groups throughout the school and is also trained to deliver 'Circle of Friends'. Mrs Stone also delivers regular assemblies to the whole school on mental health and well-being. We celebrate Children's Mental Health week each year.

We also have an MHST mentor who works at our school 2 afternoons a week. She works 1:1 with pupils, small groups and runs a lunchtime club.

### **Concerns and Worries**

If you have concerns about your child the first point of contact should be your child's class teacher. If you have any further questions regarding Special Educational Needs and Disability then Mrs Reddings will be happy to meet with you to answer your questions. To arrange an appointment, ring the school office on 0115 9155756 or email [admin@southwold.nottingham.sch.uk](mailto:admin@southwold.nottingham.sch.uk).

Please also visit the school website for access to other policies which may be helpful including:

Anti-bullying Policy

Behaviour Policy

Equalities Policy

Special Educational Needs and Disability Policy

### **Further Information**

How are the school governors involved and what are their responsibilities?

The Headteacher and SENCo report to the Governors to inform them about the achievement of children with SEND; this report does not refer to individual children and confidentiality is maintained at all times. A named governor has responsibility for SEND and meets with the school SENCO regularly. The Governors are responsible for agreeing policies which relate to this area of school life.

### **The Local Offer**

Nottingham City Council is transforming the way it offers help and support to children and young people with Special Educational Needs and Disabilities (SEND). We're bringing together all of the information on services and support in one place – our Local Offer website:

<https://www.asklion.co.uk/kb5/nottingham/directory/localoffer.page?directorychannel=7>

Would you prefer a paper copy of the Local Offer? Contact the Families Information Service on Tel: 0800 4584114, and we can provide you with a customised document listing the services most relevant to your needs.